

MODERNISING LOCAL GOVERNMENT IN NORTHERN IRELAND



INVESTOR IN PEOPLE



Department of the
Environment
www.doeni.gov.uk

Local Government Policy Agenda – Key Influences

Need for Modernisation

Need to deliver RPA Outcomes

Driver for Change – Taskforce



INVESTOR IN PEOPLE



Department of the
Environment
www.doeni.gov.uk

ROLE OF THE DOE

Responsible for:

- Boundaries Order and Boundaries Commission
- Restructuring Order – 26 Councils to 7 and Local Government Modernisation
- Transfer of Functions Order
- Oversight responsibility Local Government project plan



INVESTOR IN PEOPLE



Department of the
Environment
www.doeni.gov.uk

TIMETABLE: KEY DATES

- Boundaries Order** - May 2006
 - Boundary Commissioner** - July 2006 – Summer 2007
 - Policy Scoping & Development**
(Taskforce) - March –Sept 2006
 - Restructuring Order** - Sept 2006 – Nov 2007
-
- i. Drafting Legislation
 - ii. Consultation
 - iii. Impact Assessment
 - iv. Final Instructions
 - v. Order Drafted
 - vi. Further Consultation
 - vii. Parliament Procedure



Local Government Taskforce Terms of Reference

The Local Government Taskforce will produce proposals for modern and effective local government in light of the requirements of the Review of Public Administration and other drivers for change. In developing these proposals the Taskforce will seek to create a system of local

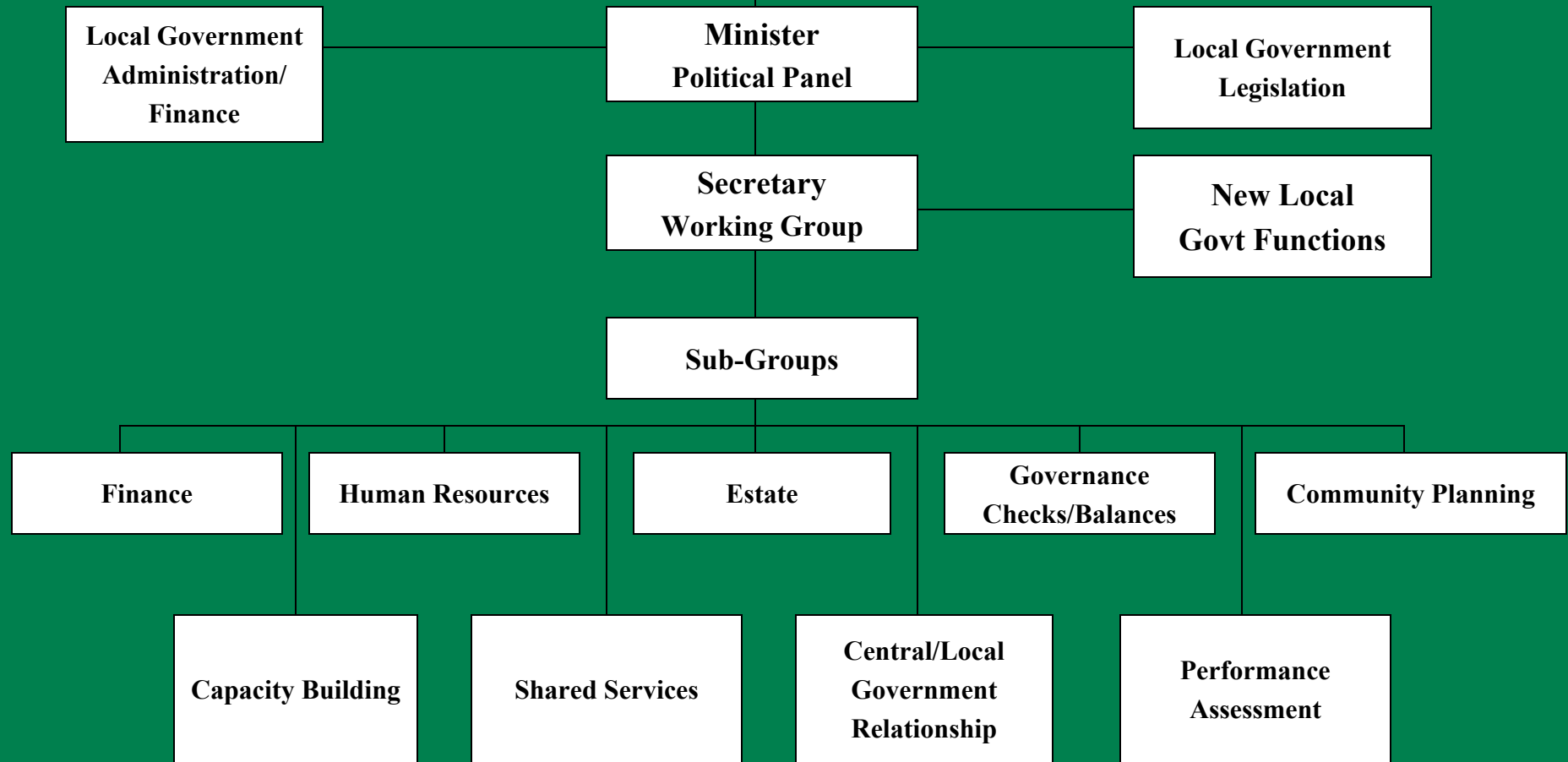


INVESTOR IN PEOPLE



Department of the
Environment
www.doeri.gov.uk

TASKFORCE



INVESTOR IN PEOPLE



Department of the
Environment
www.doeni.gov.uk

IDeA Involvement

- IDeA approach based on premise that local government should be supported to drive its own change from within.
- Members/Officers learn best from their peers.
- Peer Support Approach
 - Member and Officer Peers to support Taskforce Sub Groups in policy development process
 - Community Planning, Governance, Shared Services, Central/ Local Government Relationship, Capacity Building, Performance Assessment.



INVESTOR IN PEOPLE



Department of the
Environment
www.doeni.gov.uk

Taskforce Workstreams: Taking the Process Forward

- One Model will not fit all.
- Local Government involvement in all workstreams.
- Six workstreams supported by IDeA peers.
- All workstreams supported by DoE resource.
- All workstreams will seek appropriate engagement of relevant stakeholders in a manner appropriate to subject matter.
- Workstreams operating in partnership and in silos.



INVESTOR IN PEOPLE



Department of the
Environment
www.doeni.gov.uk

Progress To Date

- Inaugural Meetings of Taskforce Political Panel and Working Group
- Chairs of Sub Groups appointed
- Political involvement agreed
- Officer involvement secured
- Second Local Government Director appointed. Coordination of transfer of functions beginning.



INVESTOR IN PEOPLE



Department of the
Environment
www.doeni.gov.uk