

Maureen Taggart

NIHE

Chair of HR Sub-Group

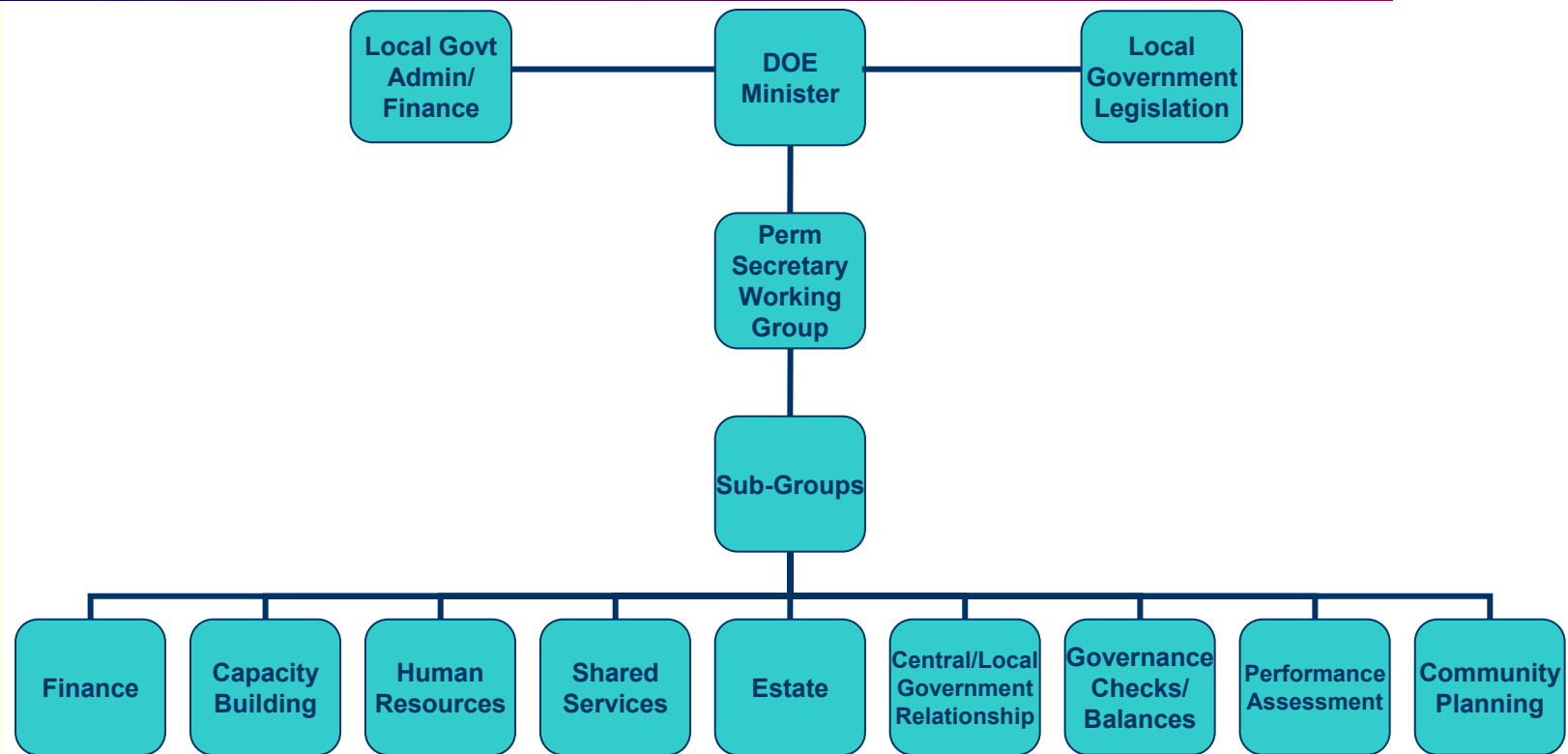


People Making Change Happen





Taskforce



**Housing
Executive**

www.nihe.gov.uk

The Regional Housing Authority



Terms of Reference

- Inform the discussion of the Public Service Commission
- Examine and make recommendations on the optimum approach to taking forward, within a local government context, the agreed PSC guiding principles



Terms of Reference

cont'd.

- Ensure the delivery of the new staffing structures necessary to deliver the new local government arrangements
- Facilitate the departure of surplus local government staff
- Propose the optimum arrangements for the provision of HR services within the new local government structures and to do so within a timescale which enables the drafting of new local government legislation



Cross Cutting Themes

- Central/Local Government relationship
- Shared services
- Capacity building
- Transfer of functions




Membership

- Political Parties
- SOLACE (7)
- SOCPO / PPMA (2)
- N.I. Civil Service (3)
- Local Government Staff Commission (1)
- Trade Union Side
- Others to be agreed



Timescale

- Research **April/May 2006**
 - Issue discussion paper
 - Produce recommendations for further discussion
 - Final report **End June 2006**
- 



Scope

- Structure
- Filling the structure
- People management
- Future models



Principles

- Fit for purpose
- Strong Local Government
- Citizens



Principles

cont'd.

- Recognises and values work of staff
- past, present and future
- Fairness and equity
- Building challenging and satisfying career
- Strong HR framework